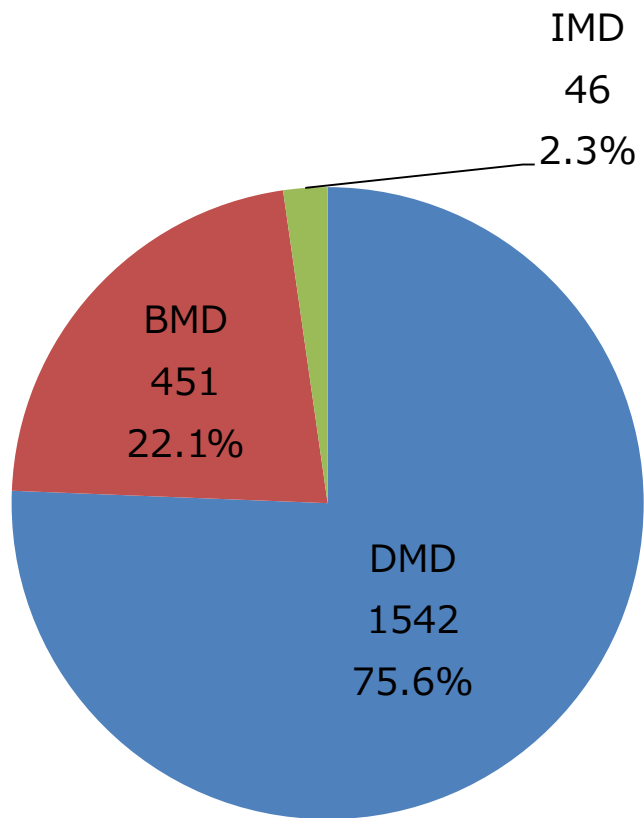
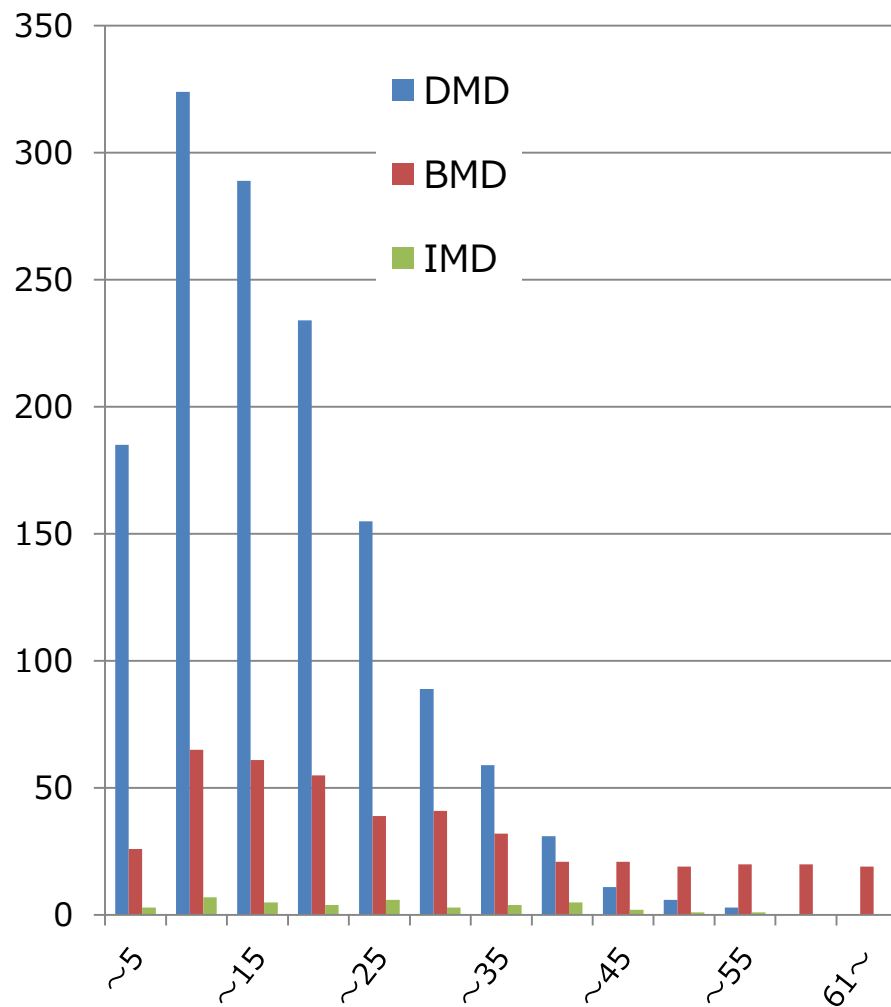


# Dystrophinopathy

診断名

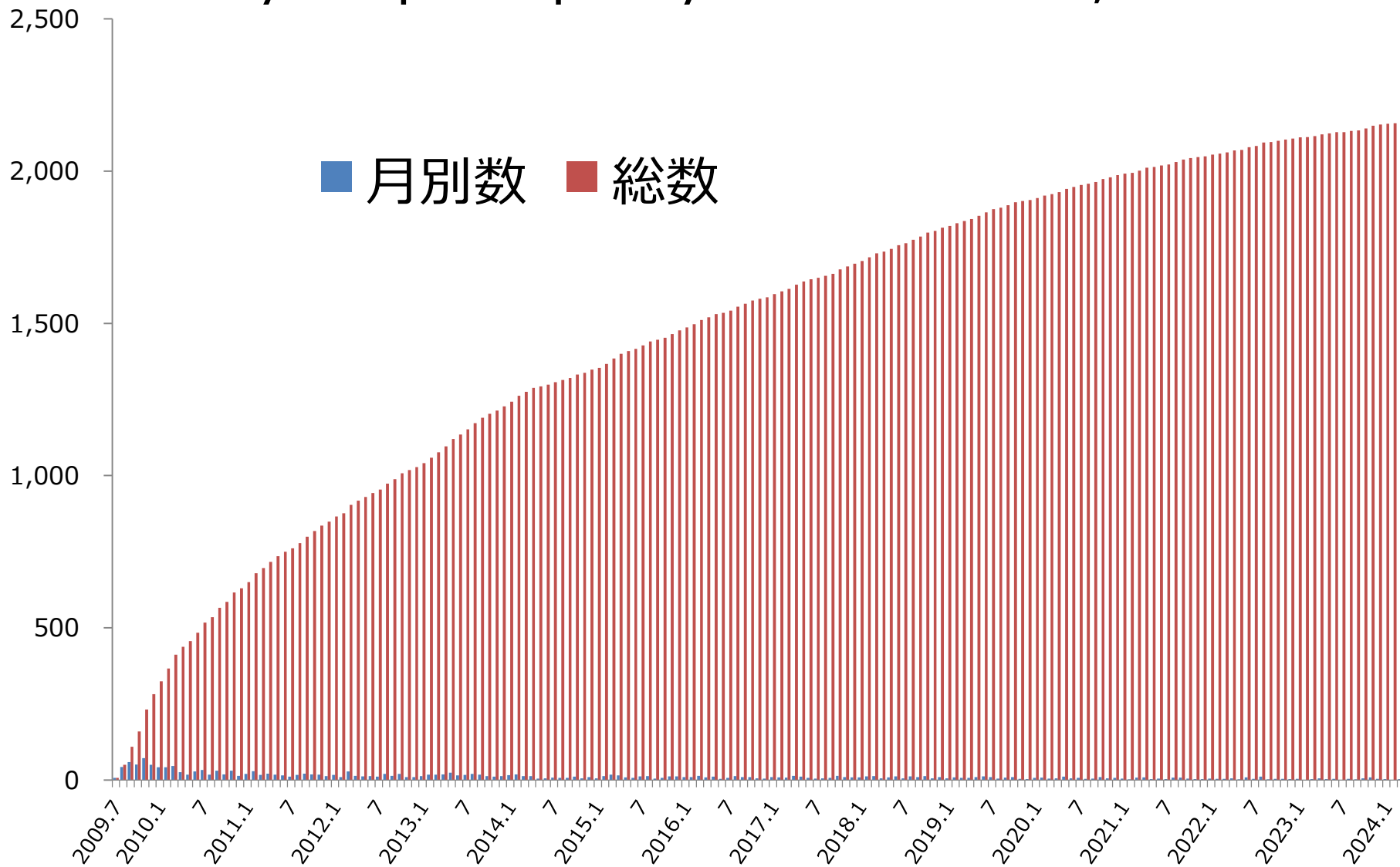


年齢

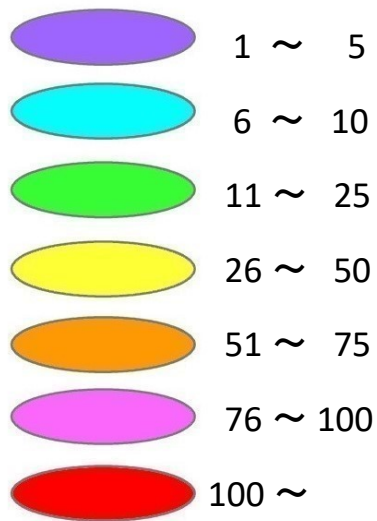


## Dystrophinopathy登録依頼数 (2,160)

■ 月別数 ■ 総数

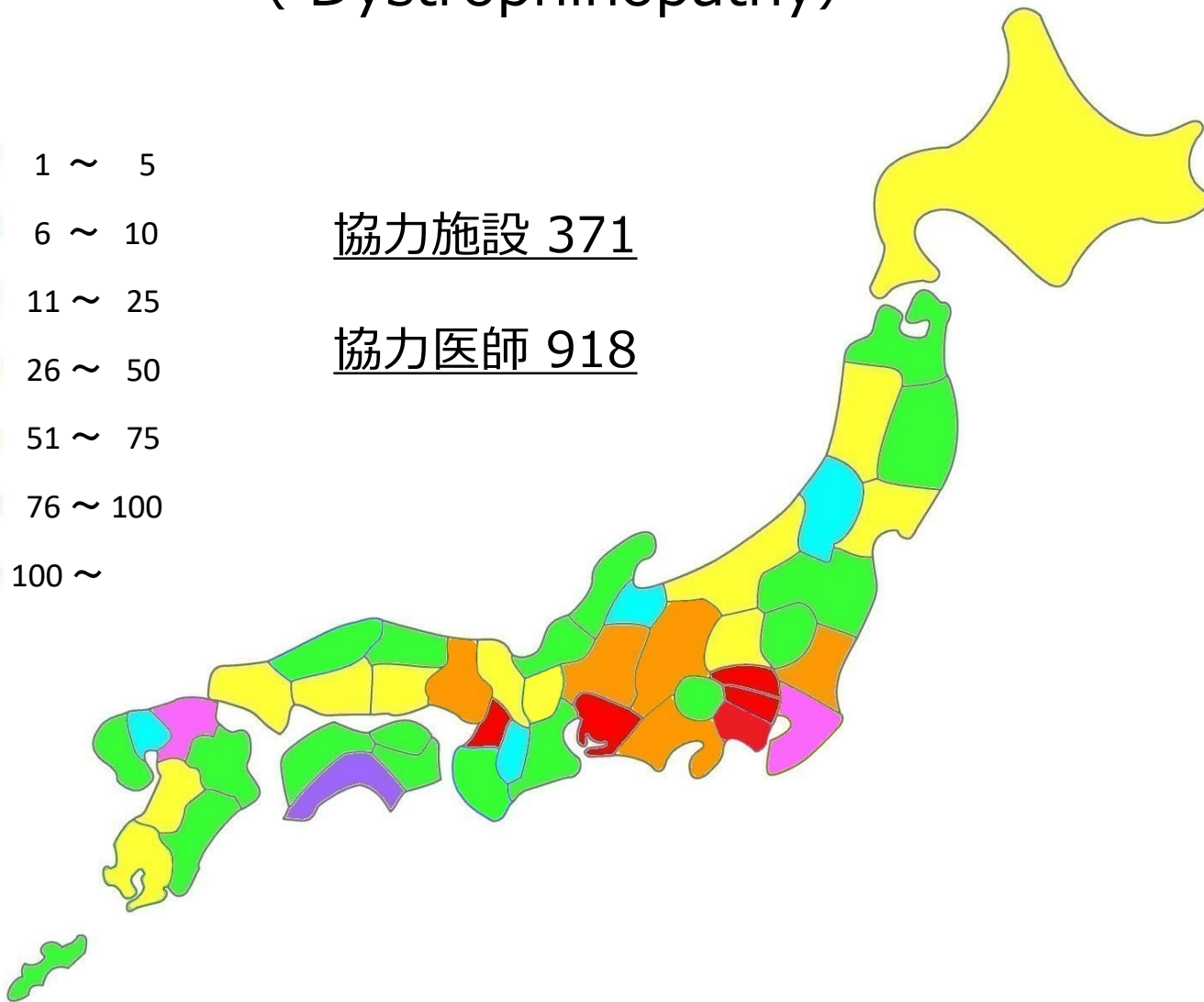


# 都道府県別の登録依頼者 (Dystrophinopathy)

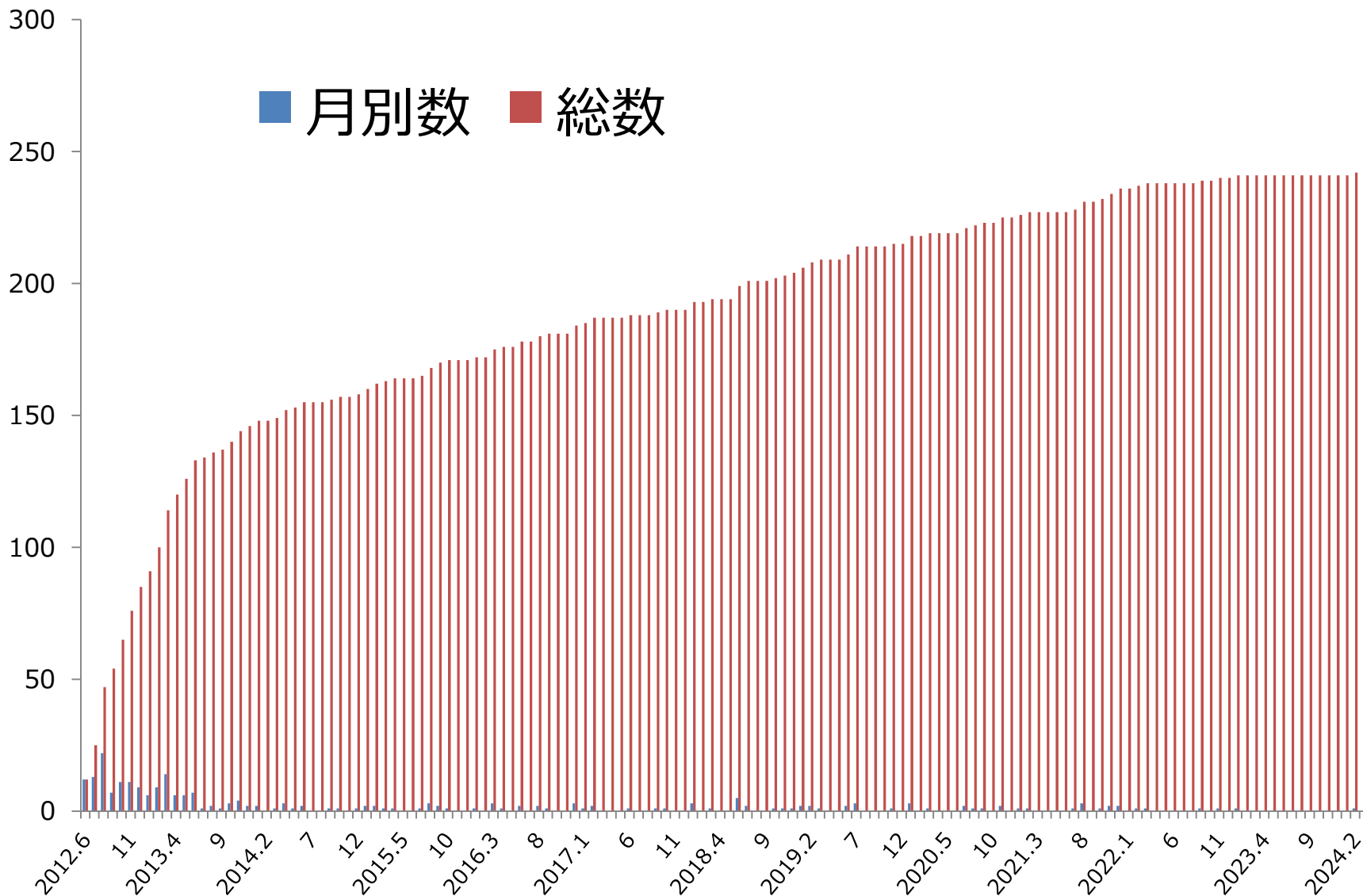


協力施設 371

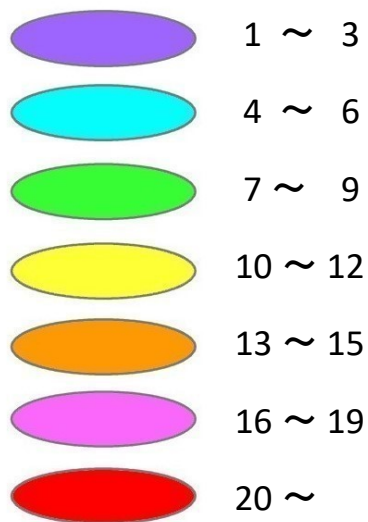
協力医師 918



# GNEミオパチー登録依頼数 (242)

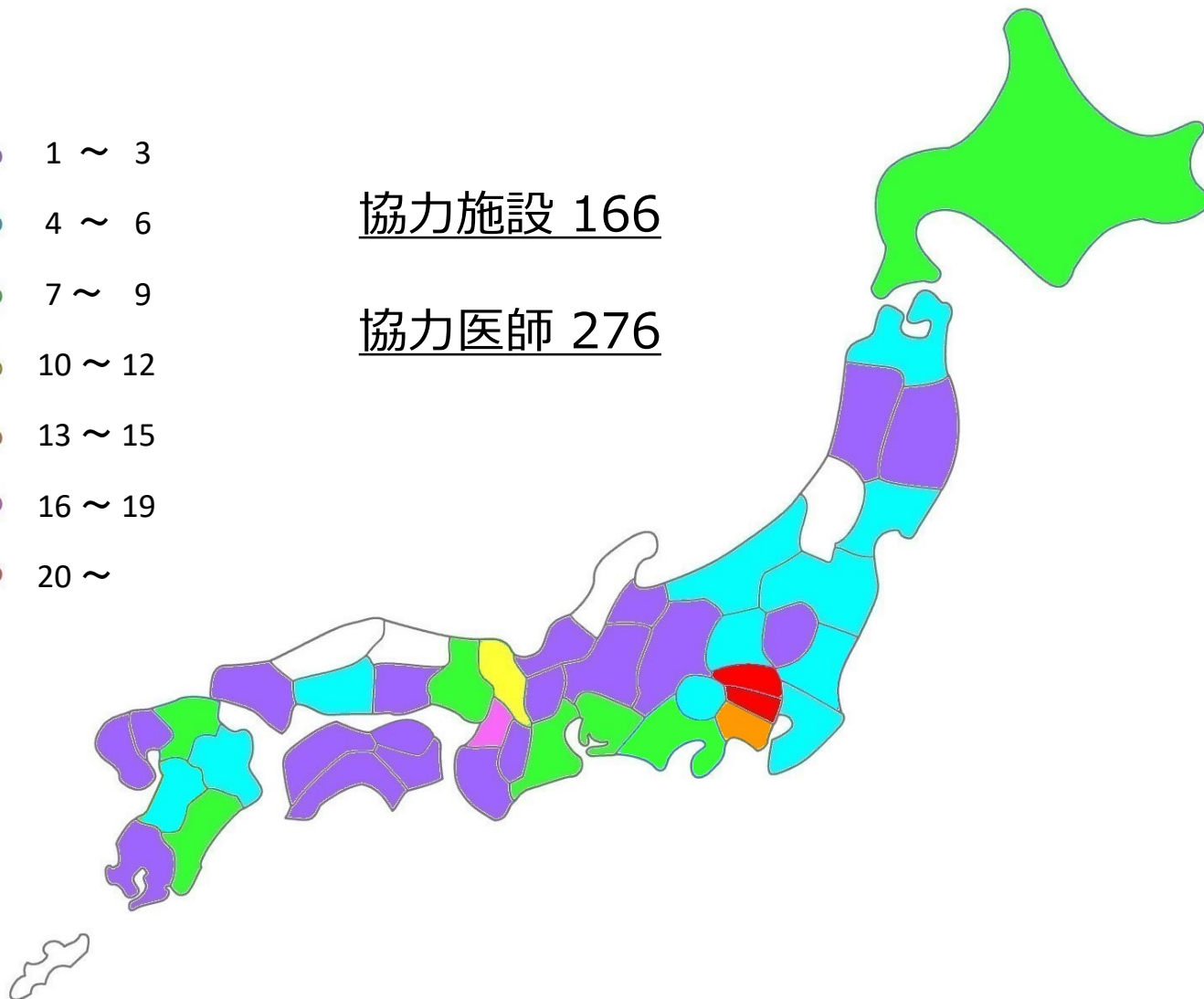


## 都道府県別の登録依頼者（GNEミオパチー）

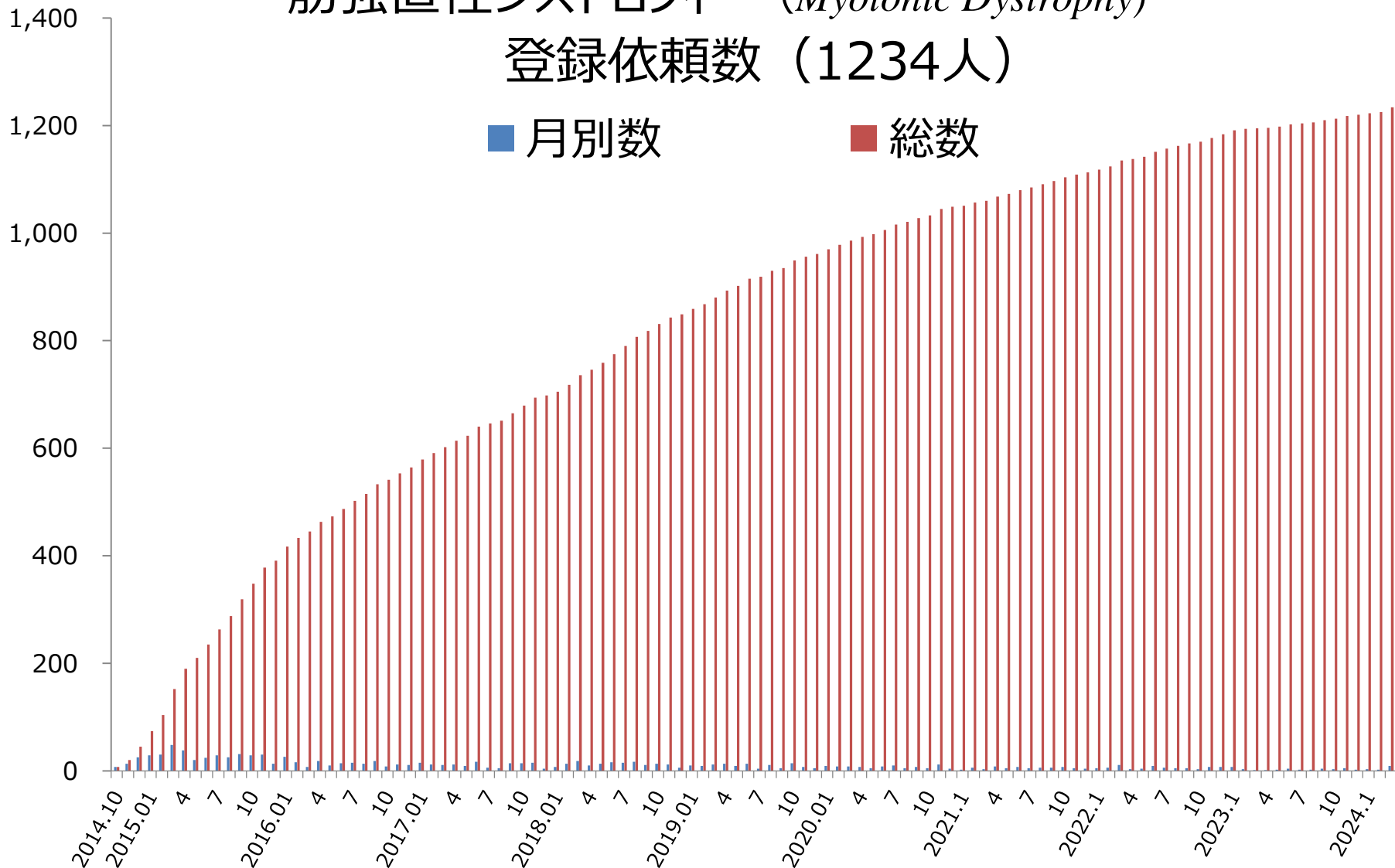


協力施設 166

協力医師 276

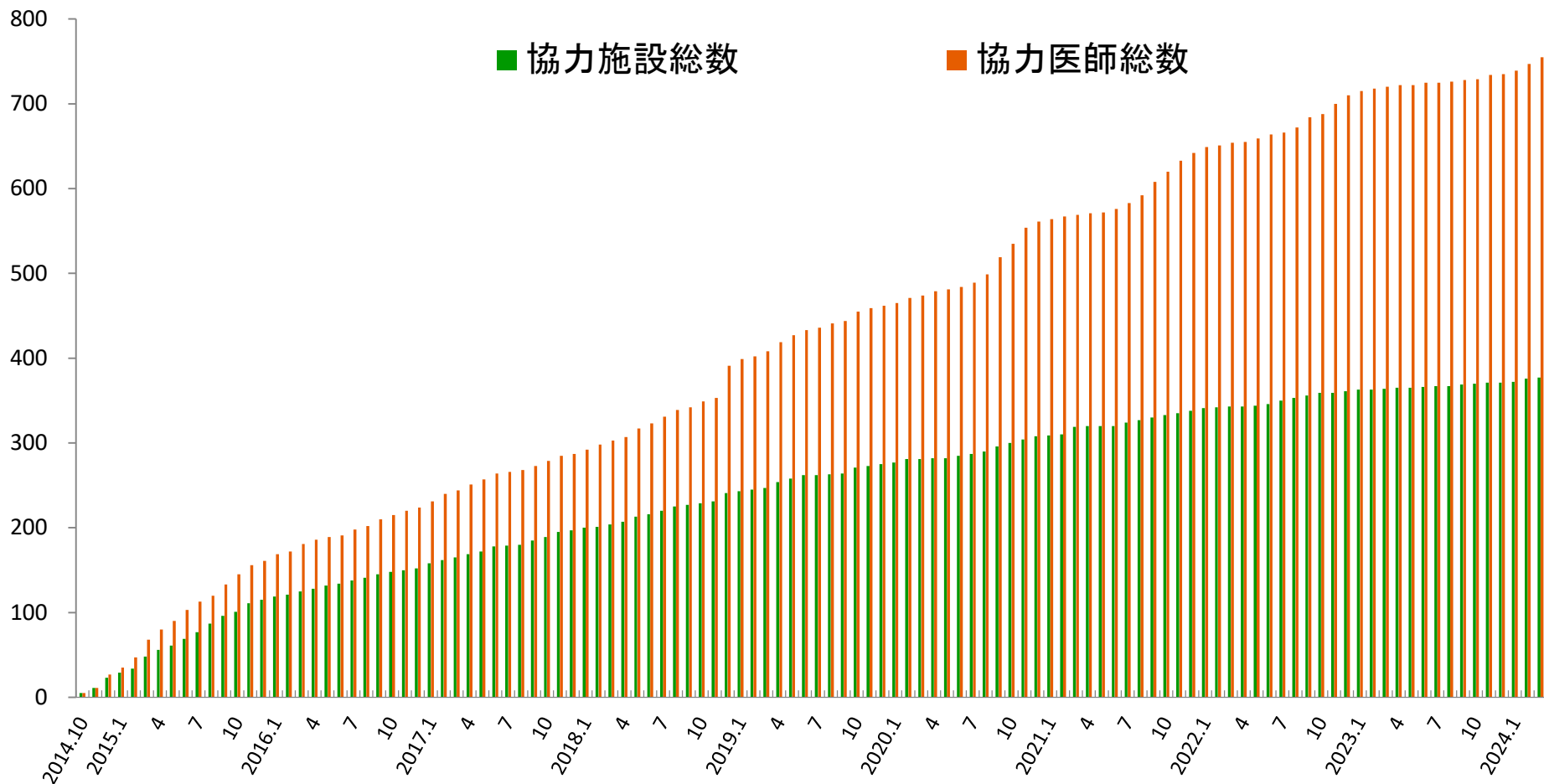


## 筋強直性ジストロフィー (Myotonic Dystrophy) 登録依頼数 (1234人)



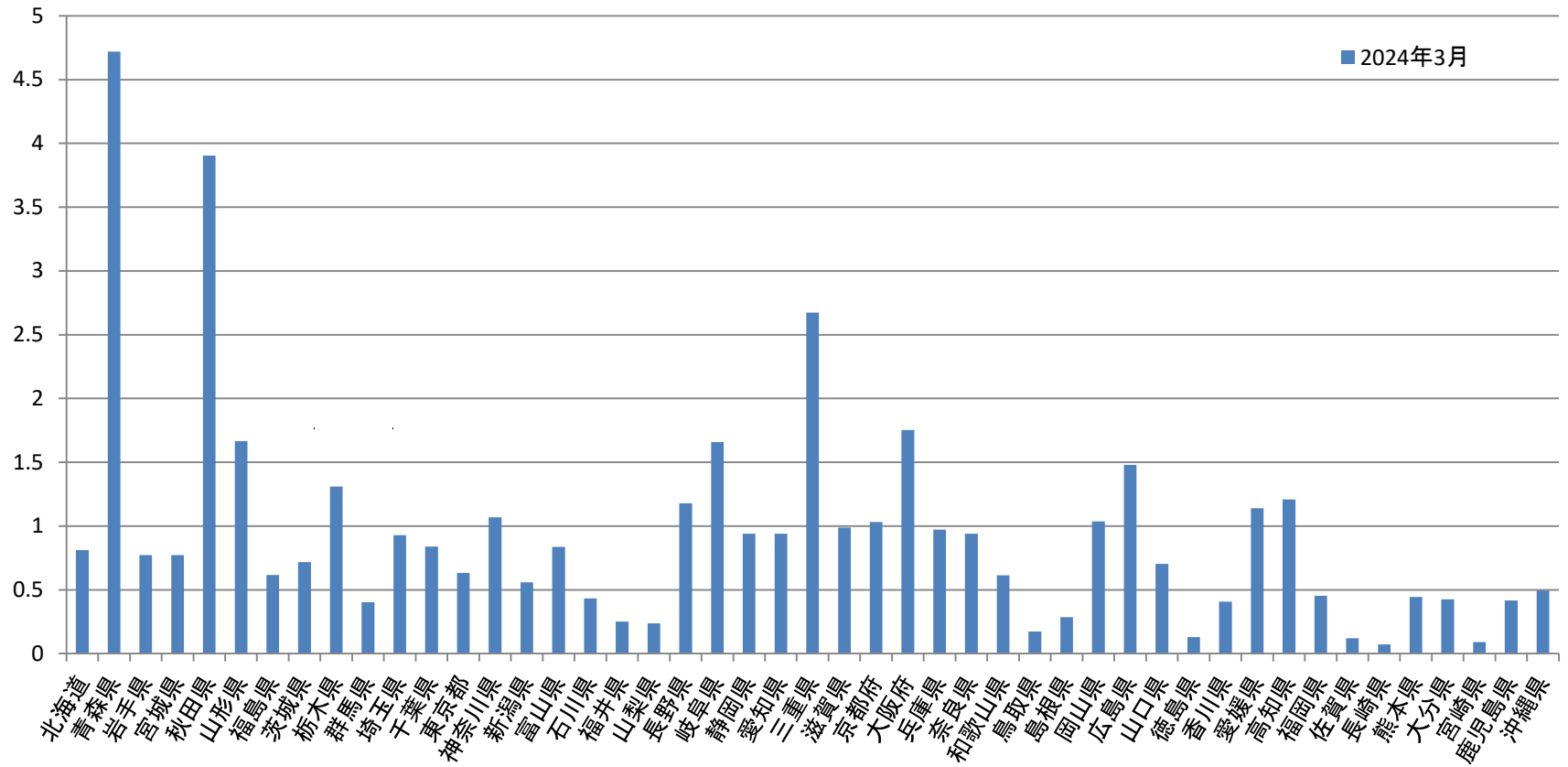
## 筋強直性ジストロフィー (Myotonic Dystrophy)

### 協力施設数 (377施設) ・協力医師数 (755名)



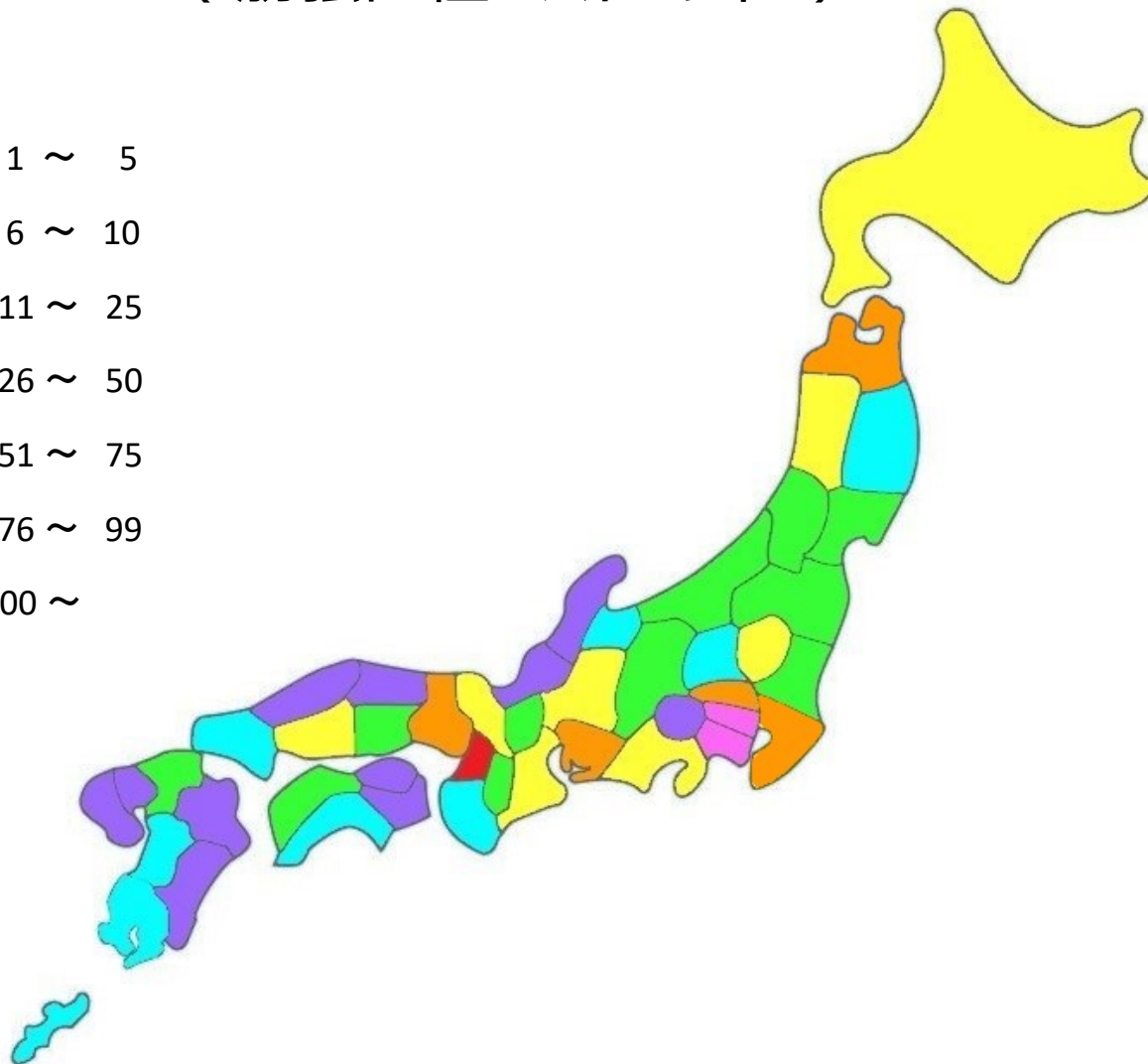
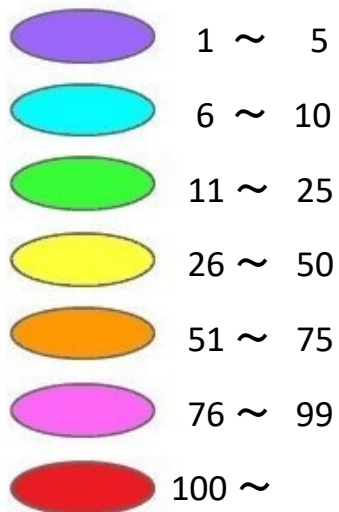
# 筋強直性ジストロフィー（Myotonic Dystrophy） 登録依頼者の分布

## 人口10万人あたりの登録依頼者数

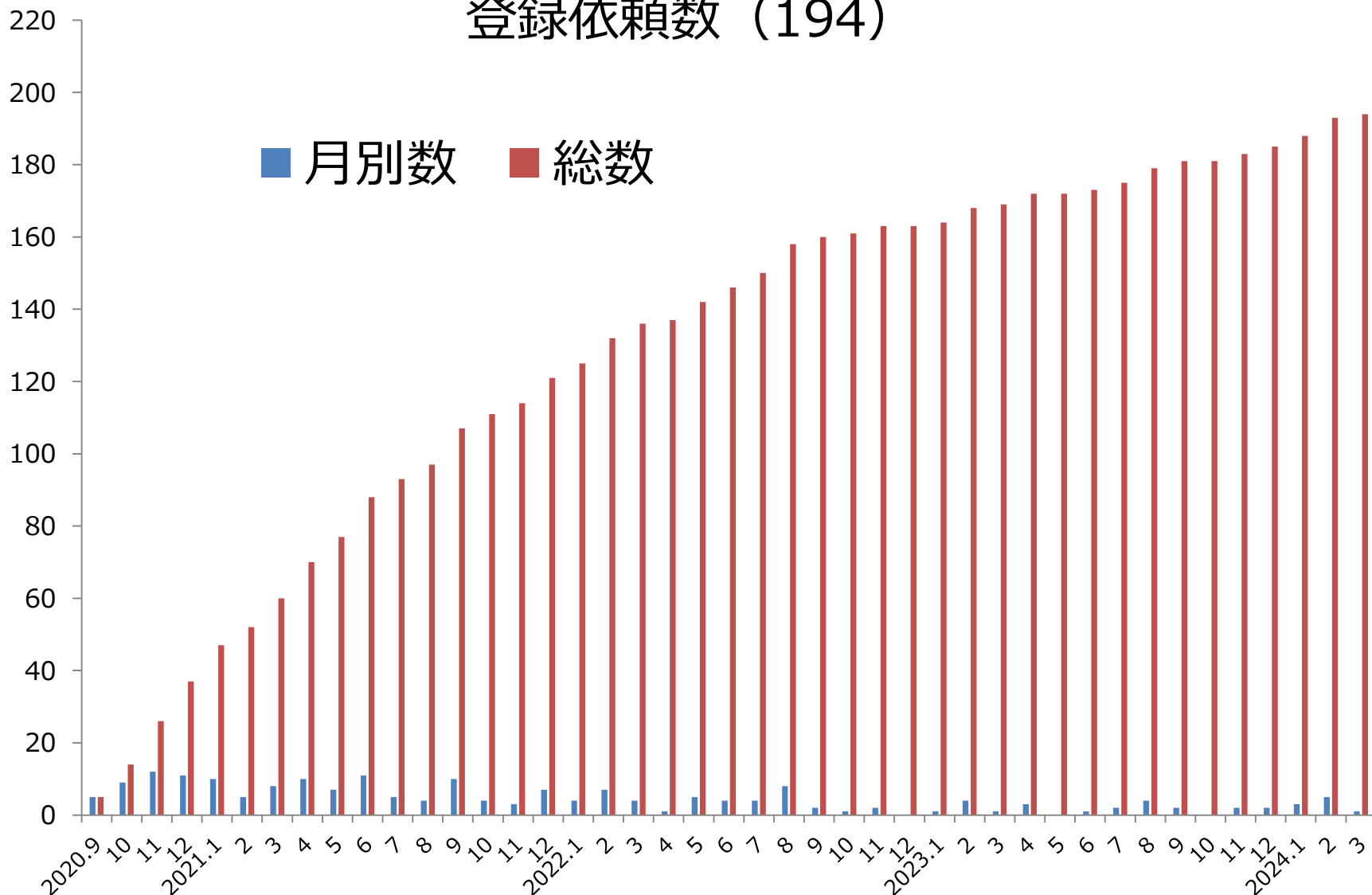




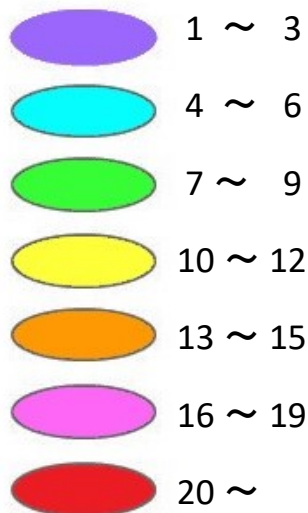
# 都道府県別の登録依頼者 (筋強直性ジストロフィー)



# 顔面肩甲上腕型筋ジストロフィー 登録依頼数 (194)

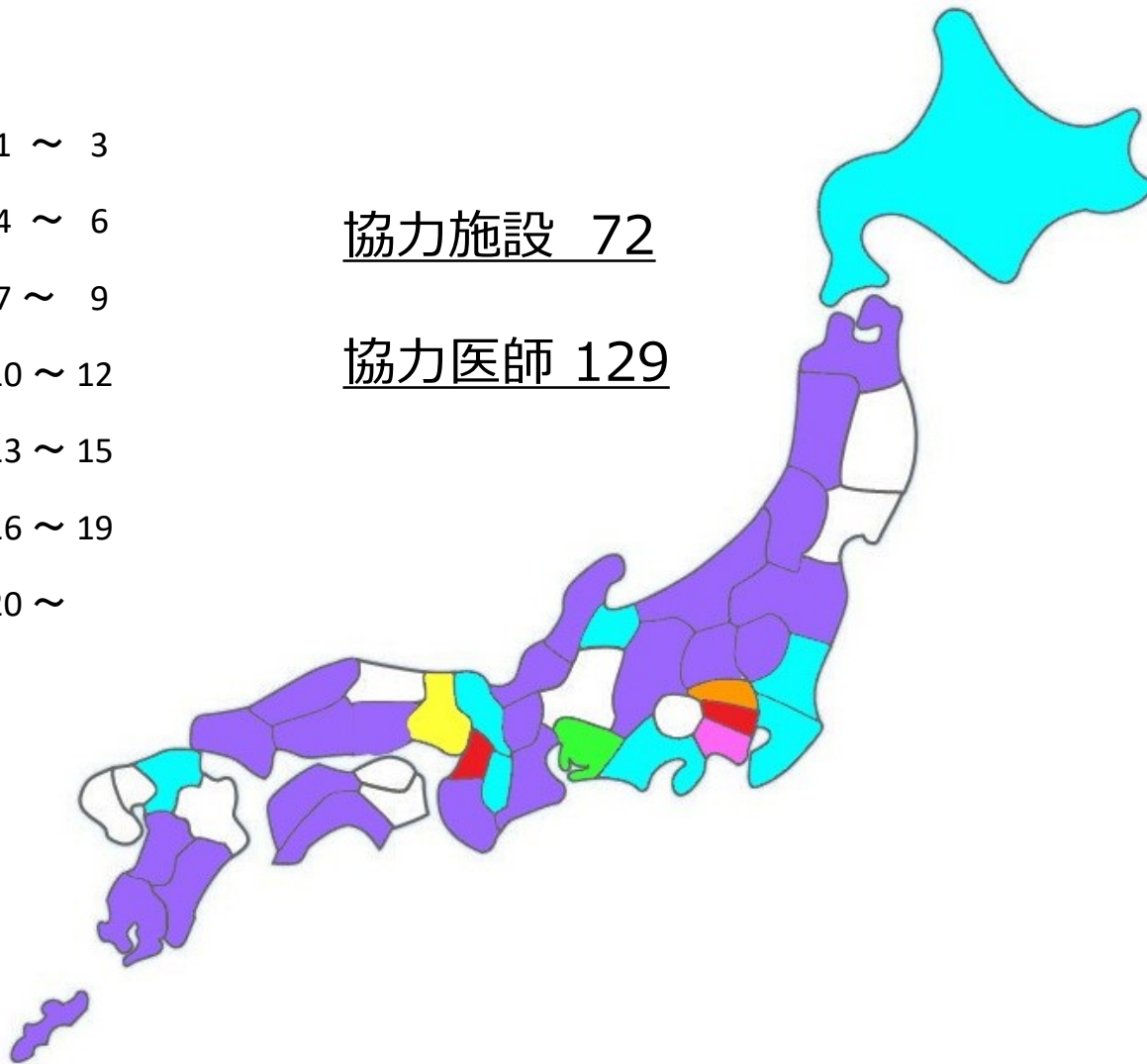


# 都道府県別の登録依頼者 (顔面肩甲上腕型筋ジストロフィー)

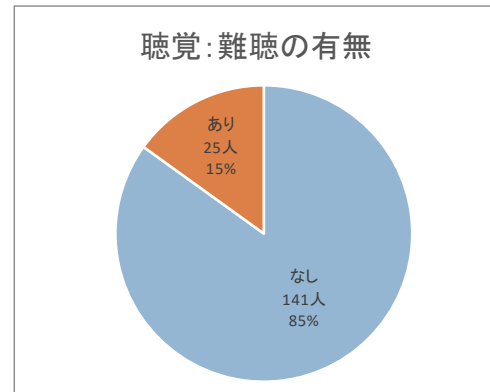
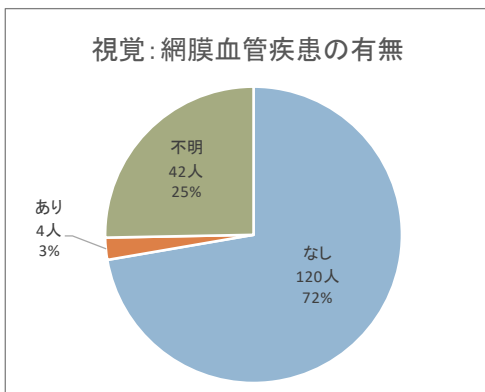
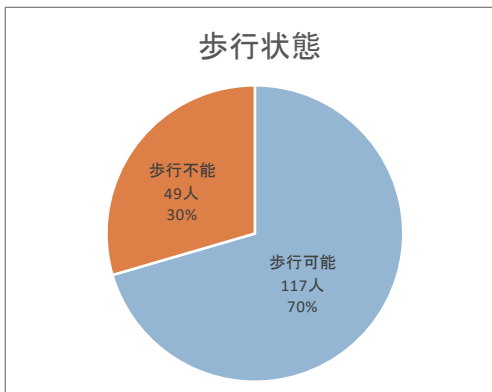
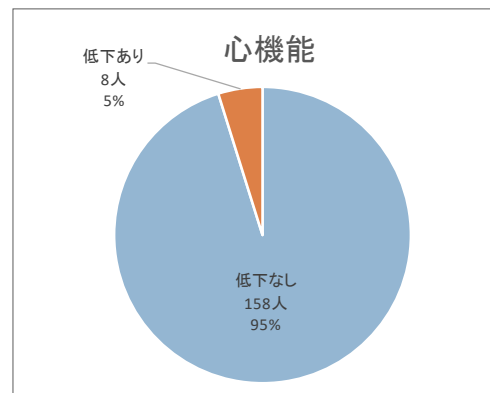
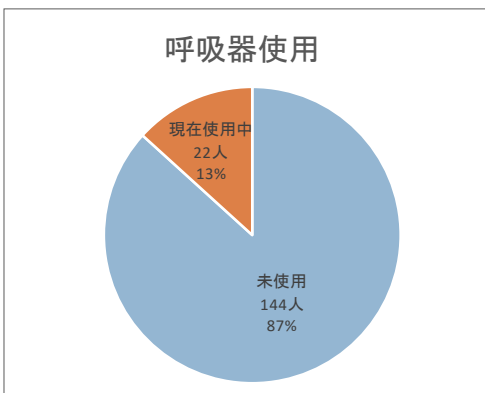
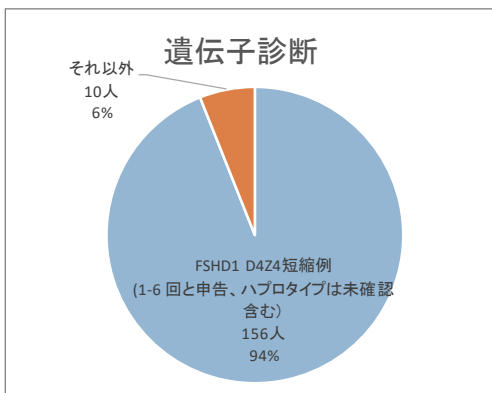
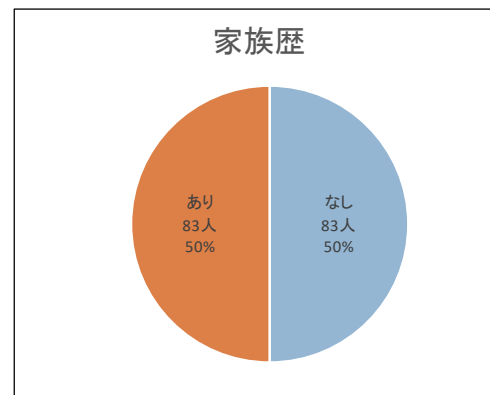
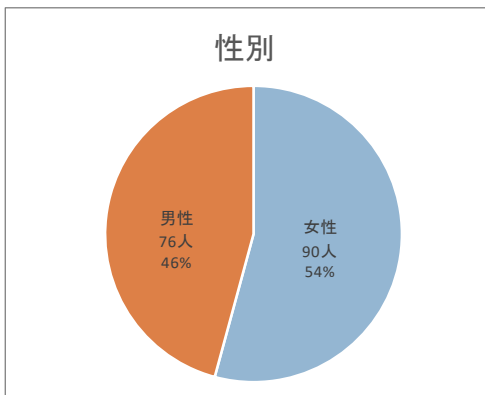
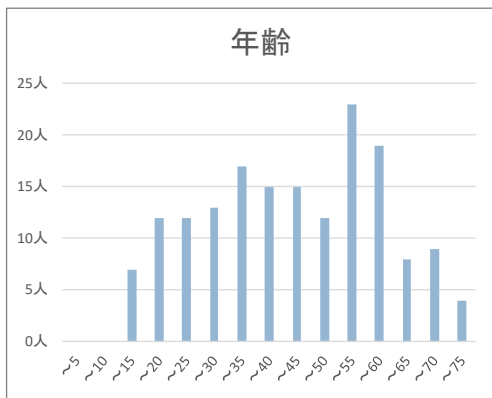


協力施設 72

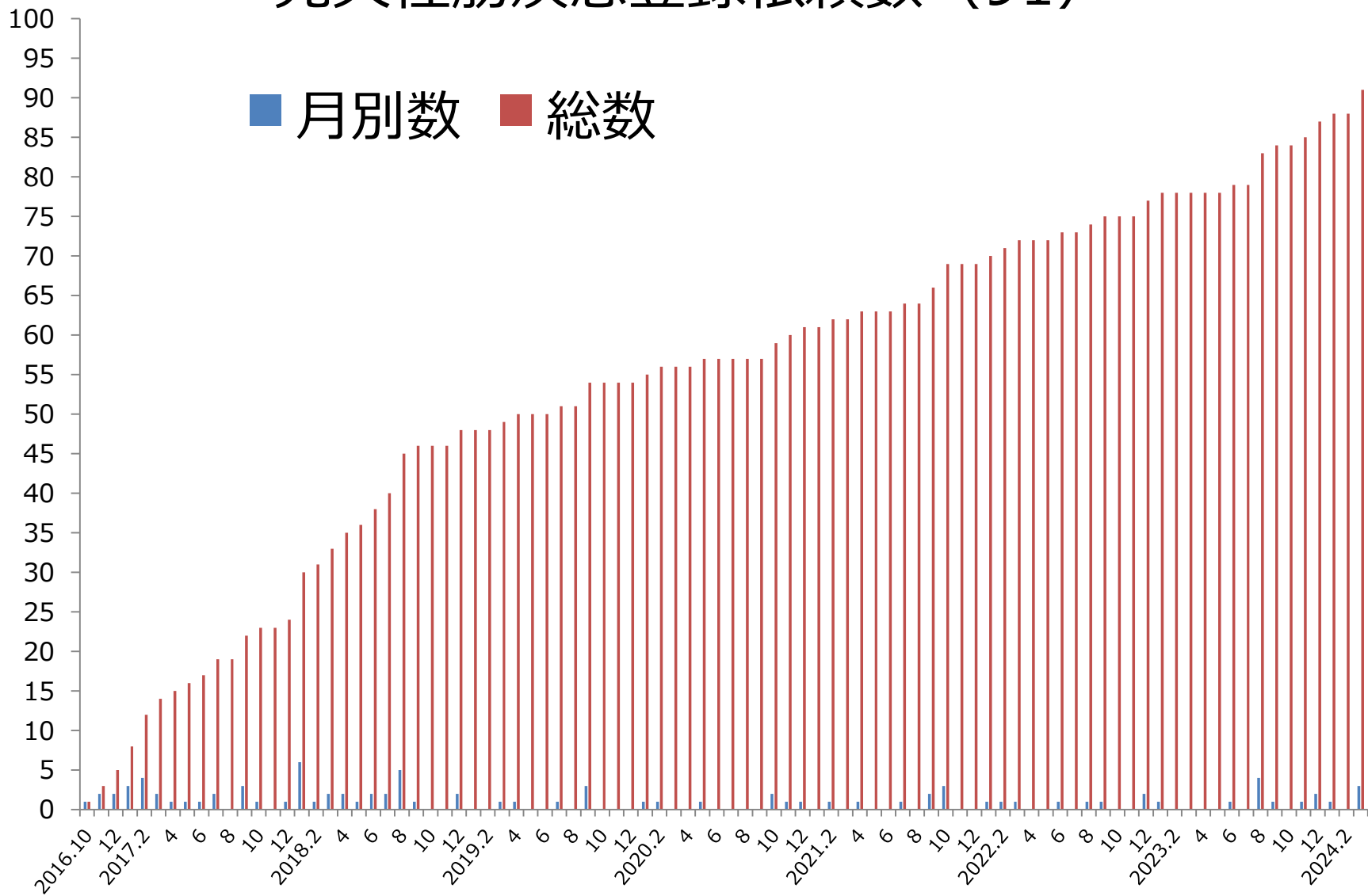
協力医師 129



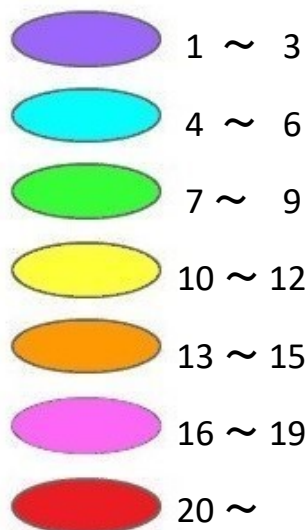
[ 顔面肩甲上腕型筋ジストロフィー ]



# 先天性筋疾患登録依頼数 (91)



# 都道府県別の登録依頼者 (先天性筋疾患)



協力施設 57

協力医師 87

